

Acoustic Measurement on Headset

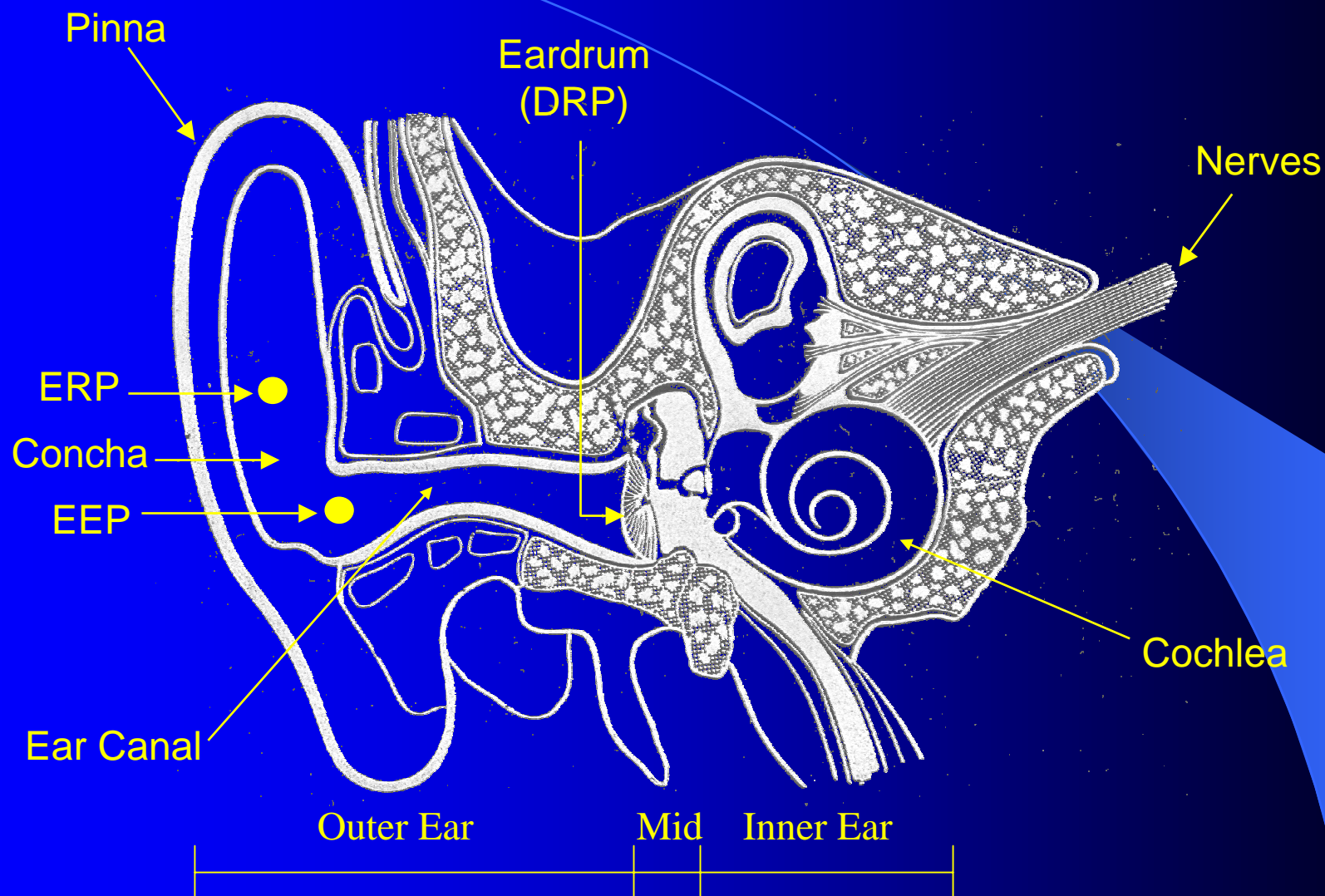
Contents

- Human Ear & Orthotelephonic Reference
- Ear Simulators
- Type of Headsets
- Old and New Test Methods
- Compare of Type 3.3 and 3.4 Ears/ ITU-T SG12 Round Robin Experiment
- Conclusion

Contents

- Human Ear & Orthotelephonic Reference
- Ear Simulators
- Type of Headsets
- Old and New Test Methods
- Compare of Type 3.3 and 3.4 Ears/ ITU-T SG12 Round Robin Experiment
- Conclusion

Human Ear



Drawing: John Bareham, Chair of IEEE STIT

Contents

- Human Ear
- Ear Simulators
- Type of Headsets
- Old and New Test Methods
- Compare of Type 3.3 and 3.4 Ears
- ITU-T SG12 Round Robin Experiment
- Conclusion

Ear Simulators as Defined in ITU-T P.57

Type of Ear	Description	Ref. Point	Up Freq. Limit
1	IEC 318 Ear Simulator	Erp	5 kHz
2	IEC 711 Occluded Ear Simulator	Drp	8 kHz
3.1	Concha Bottom Ear Simulator	Drp	8 kHz
3.2	Low and High Leak Simplified Pinna Simulators	Drp	8 kHz
3.3	IEC 959 Pinna Simulator	Drp	8 kHz
3.4	Pinna Simulator	Drp	8 kHz

Example of Type 1 / IEC 318



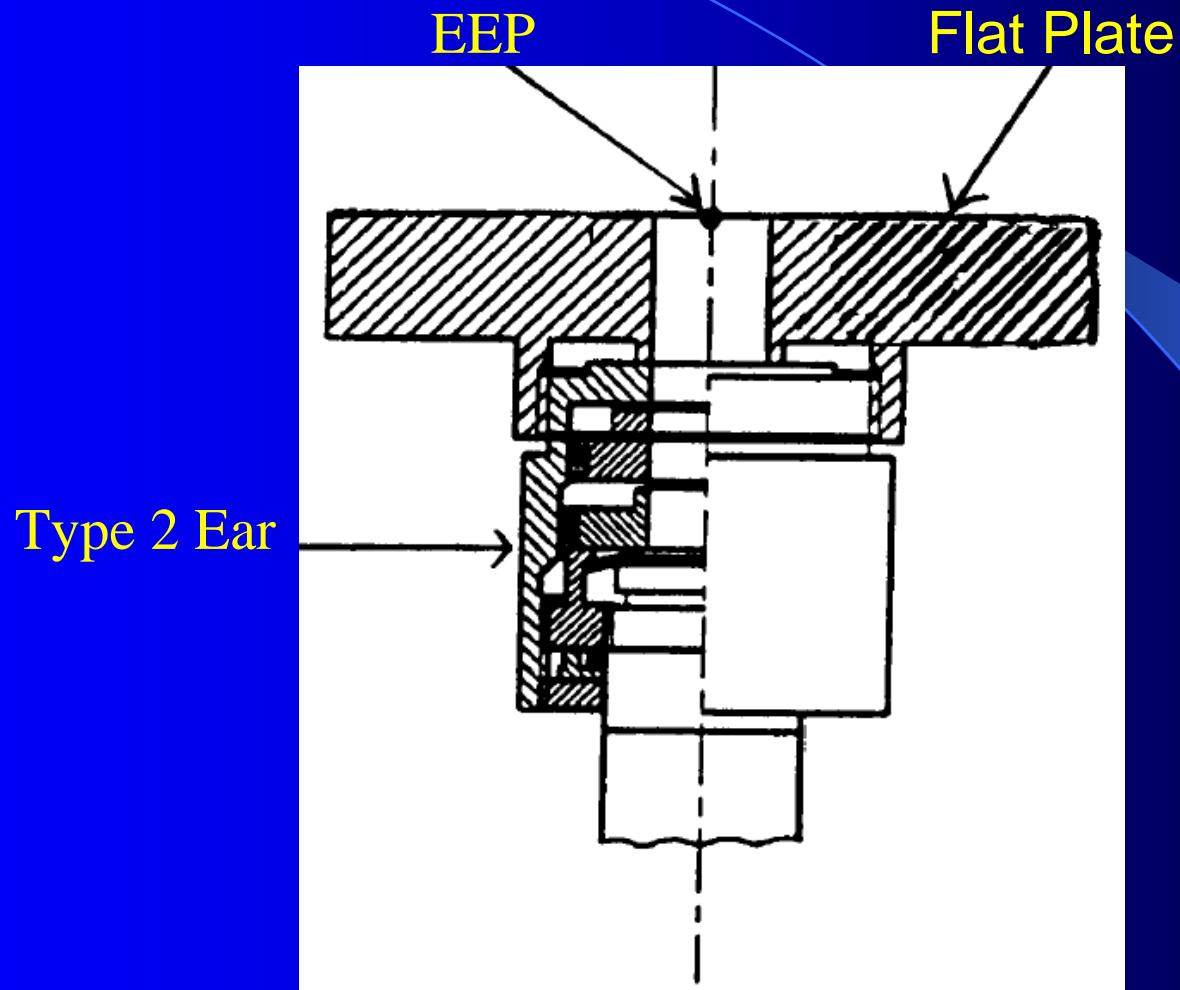
B&K 4153

Example of Type 2 / IEC 711



B&K 4157

Type 3.1



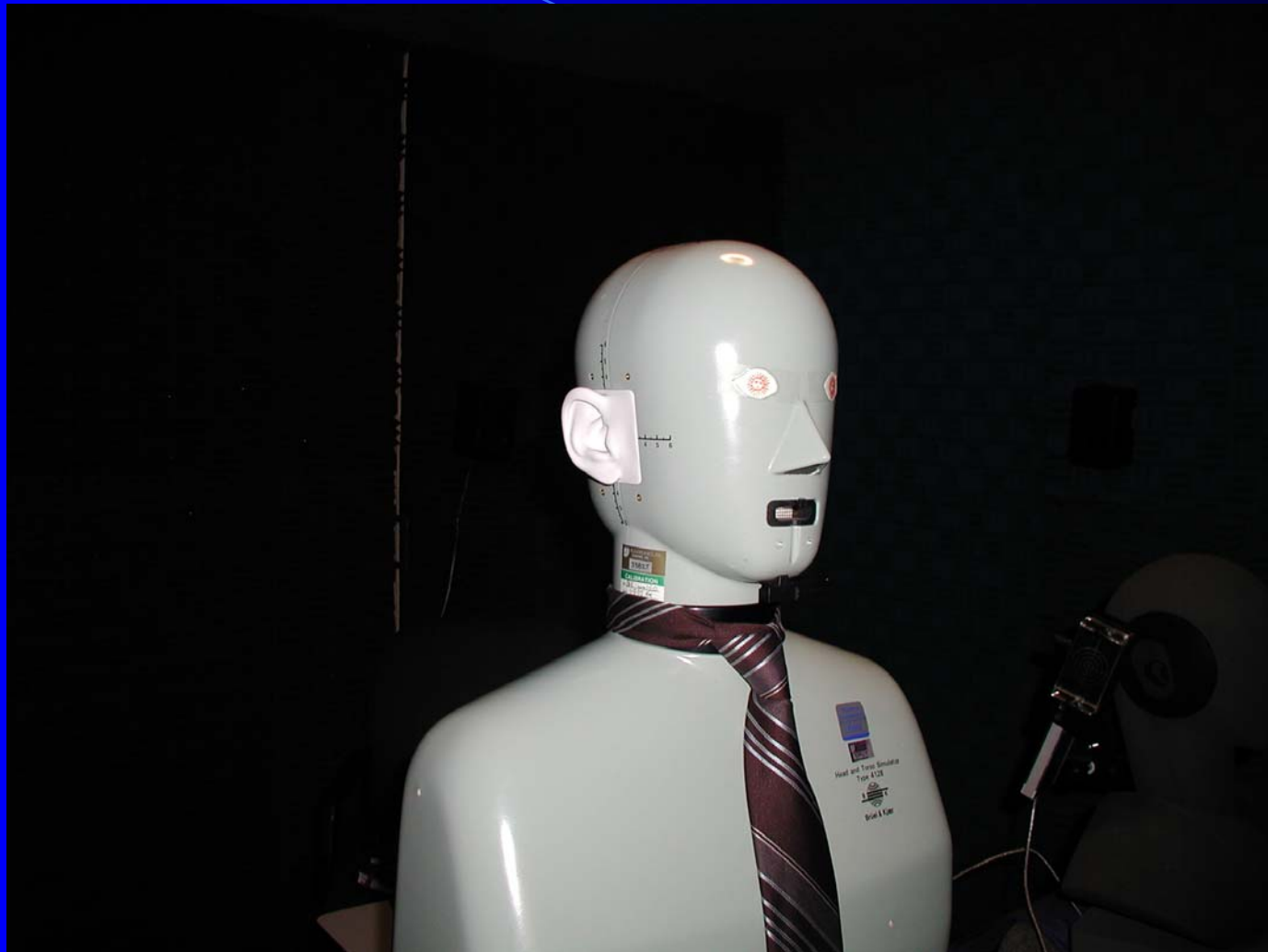
Drawing: ITU-T P.57

Example of Type 3.2 Low and High Leak



B&K 4195 Low Leak and High Leak

Example of Type 3.3



B&K 4128 HATS

Example of Type 3.4



Head Acoustic HATS

Contents

- Human Ear & Orthotelephonic Reference
- Ear Simulators
- Type of Headsets
- Old and New Test Methods
- Compare of Type 3.3 and 3.4 Ears/ ITU-T SG12 Round Robin Experiment
- Conclusion

Examples of Headsets



Insert type Headset



Intra-concha Headset



Intra-concha Headset



Surap-concha Headset

Examples of Headsets (Cont.)



Supra-aural Headset

Contents

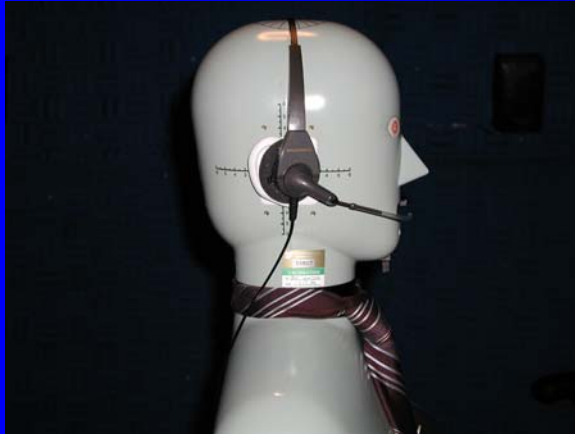
- Human Ear & Orthotelephonic Reference
- Ear Simulators
- Type of Headsets
- Old and New Test Methods
- Compare of Type 3.3 and 3.4 Ears/ ITU-T SG12 Round Robin Experiment
- Conclusion

Old Test Method



Supra-aural Headset Tested on Type 1 Ear Simulator

New Test Method Compare to Real Use



Type 3.3 HATS



Type 3.4 HATS



Questions

- What are the repeatabilities of testing on Type 3.3 and 3.4?
- Do Type 3.3 and 3.4 provide the same results?
- Do the measurements on Type 3.3 and 3.4 correspond to the measurements on real human ear?

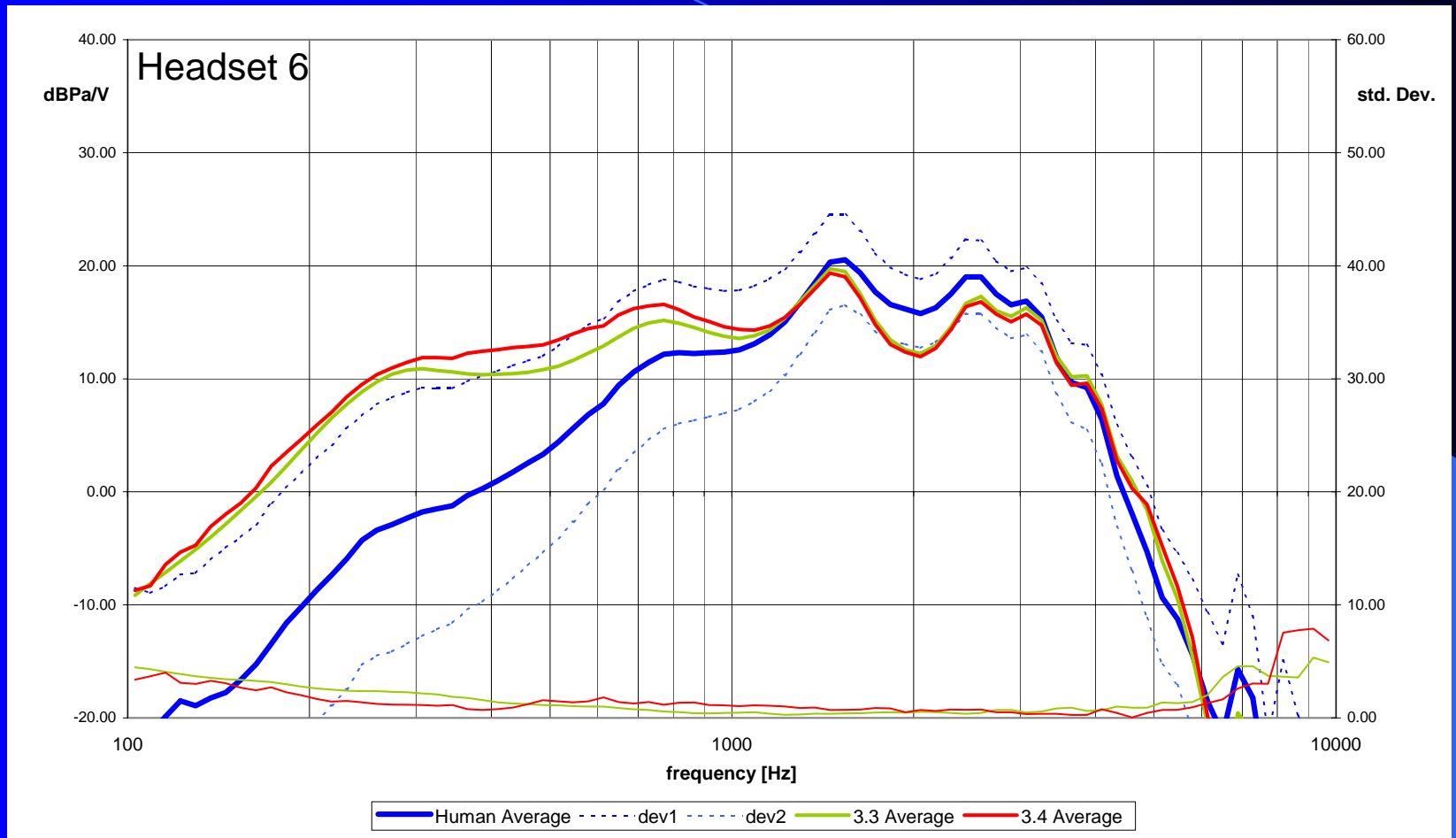
Contents

- Human Ear & Orthotelephonic Reference
- Ear Simulators
- Type of Headsets
- Old and New Test Methods
- Compare of Type 3.3 and 3.4 Ears/ ITU-T SG12 Round Robin Experiment
- Conclusion

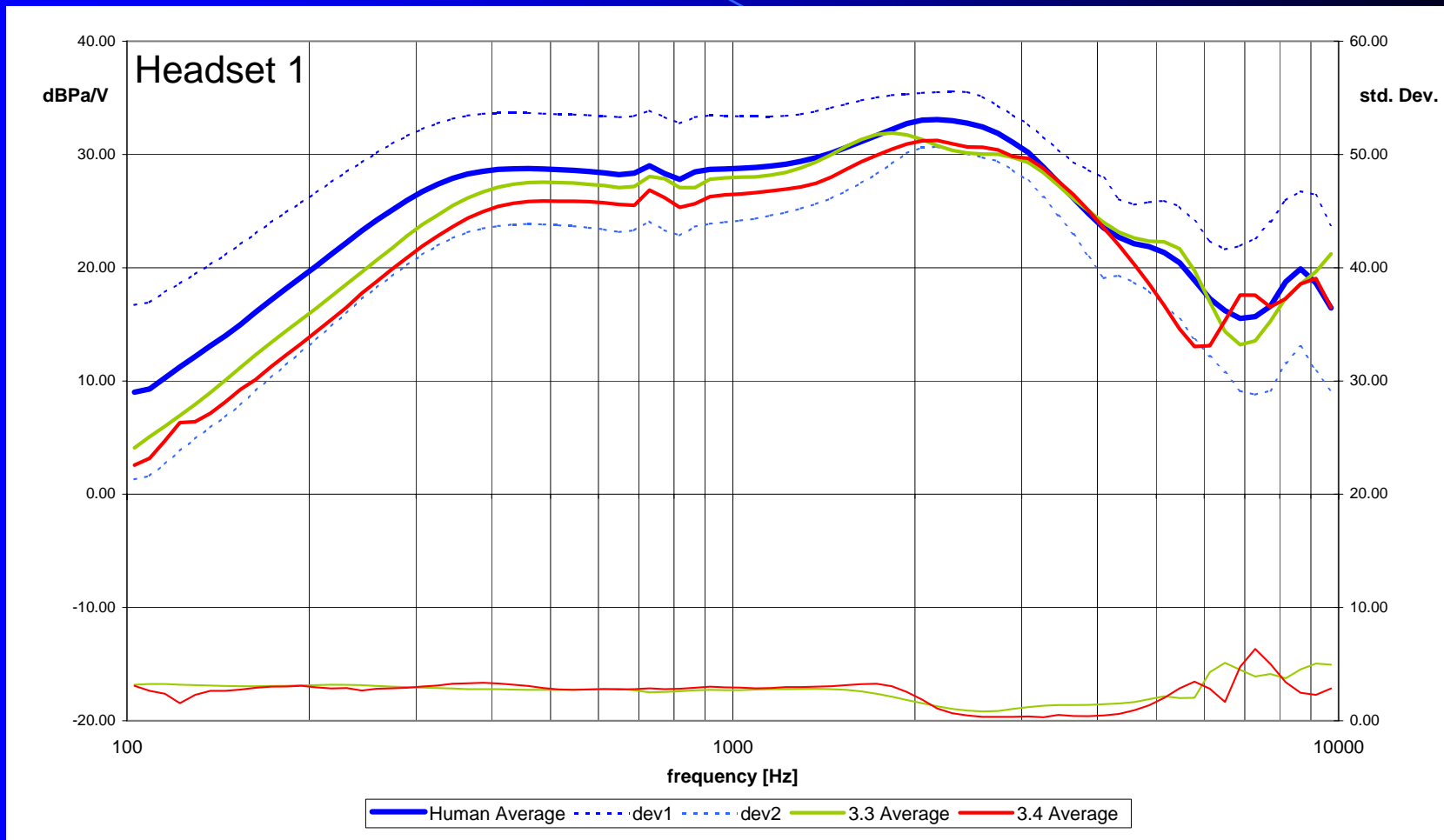
ITU-T SG12 Round Robin Study

- Four labs were participated: Plantronics, Head Acoustics, GN Netcom and B&K.
- Thirteen different type of headsets were used: insert, intra-concha, supra-concha and supra-aural, but did not include circum-aural.
- A small microphone inside ear technique was used for both HATSs and real ear measurements on headset speakers.
- Headset microphones were measured only on HATSs.
- Each headset speaker were measured 5 times on the same 3.3 and 3.4 HATSs by each operator. (Two operators for each lab).
- Each speaker were measured 5 times on each human subjects in each lab. (Twelve subjects for each lab).

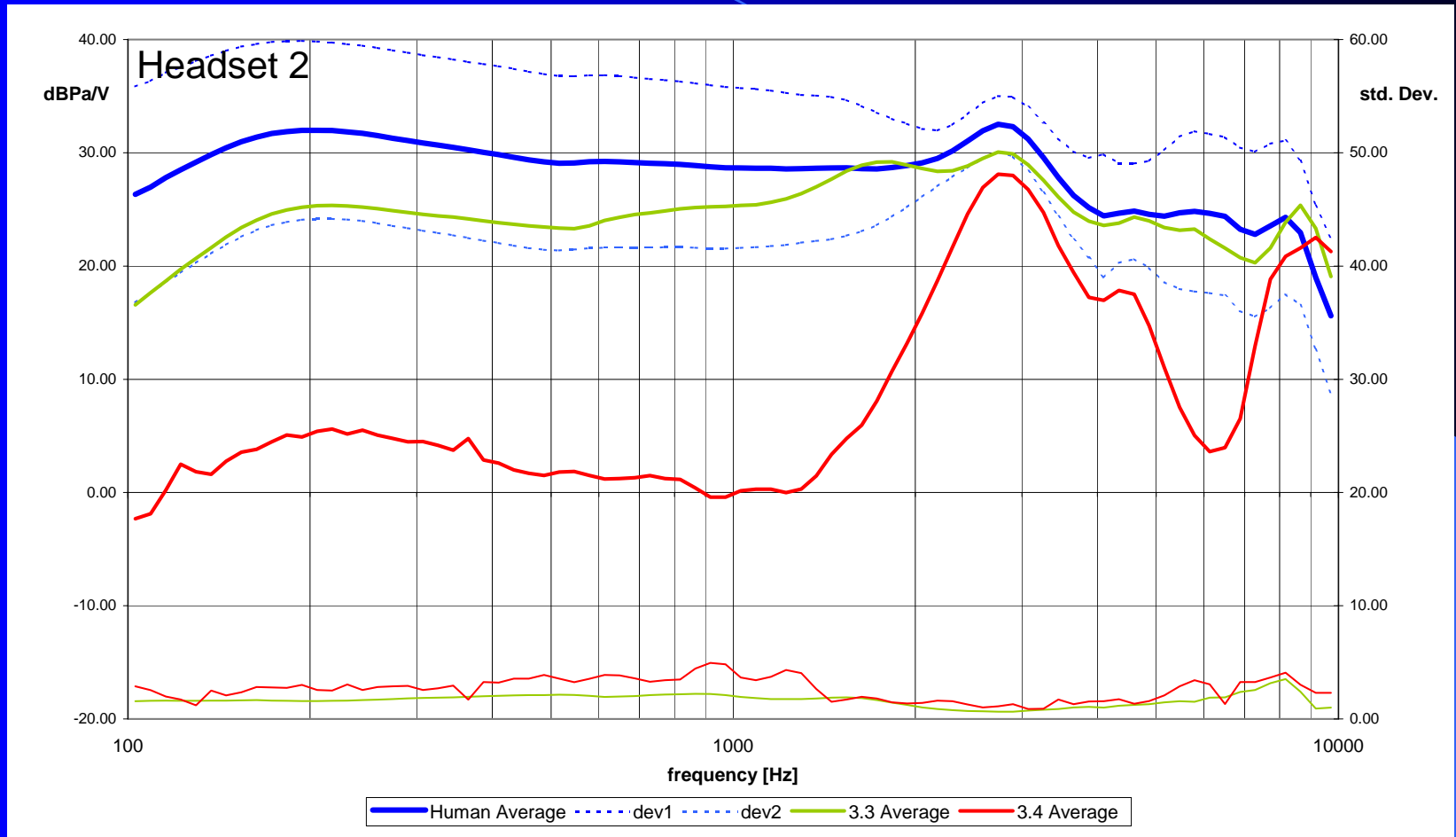
Round Robin Results on Insert Type Headset



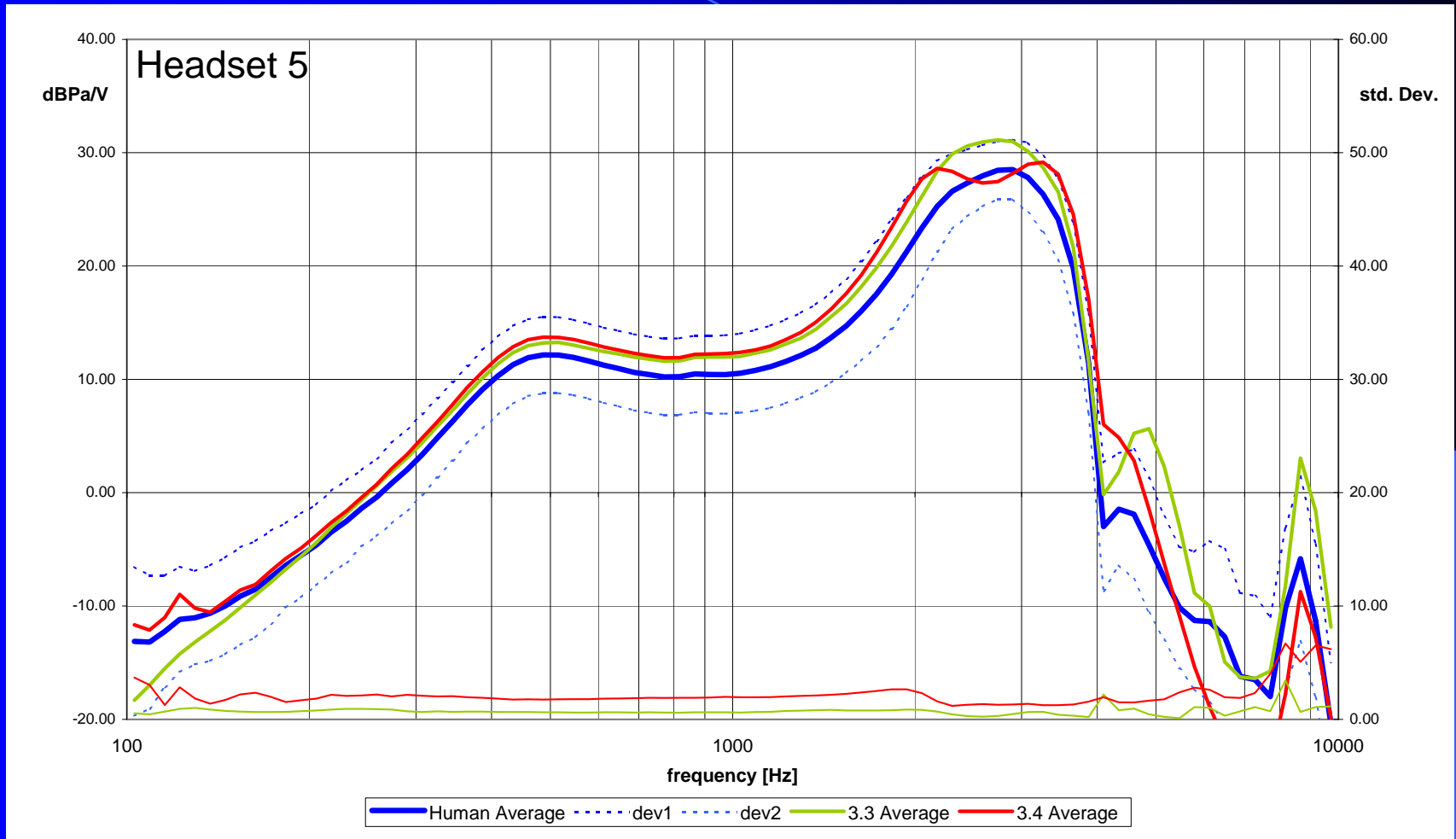
Round Robin Results on Intra-concha (Earbud) Headset



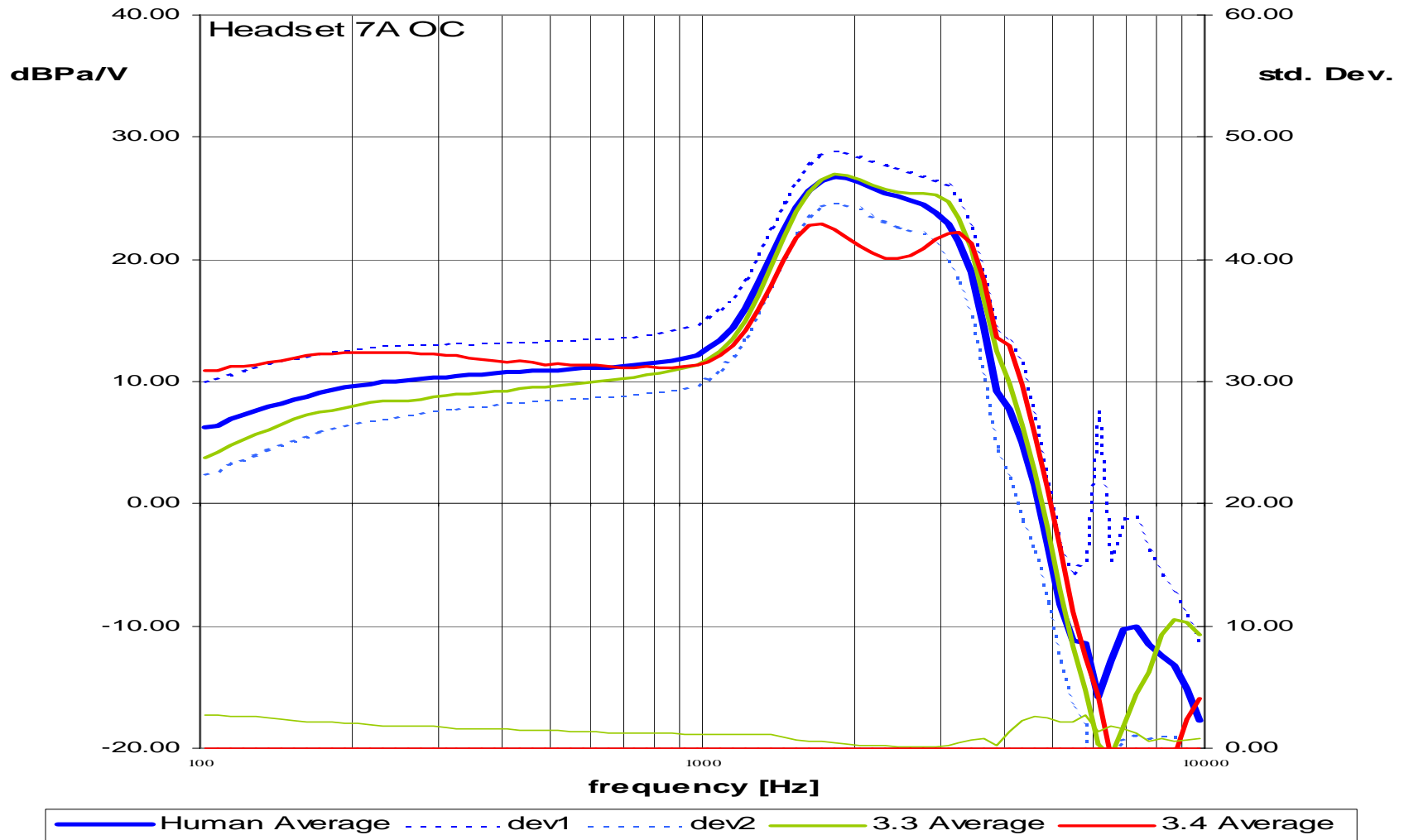
Round Robin Results on Intra-concha Headset



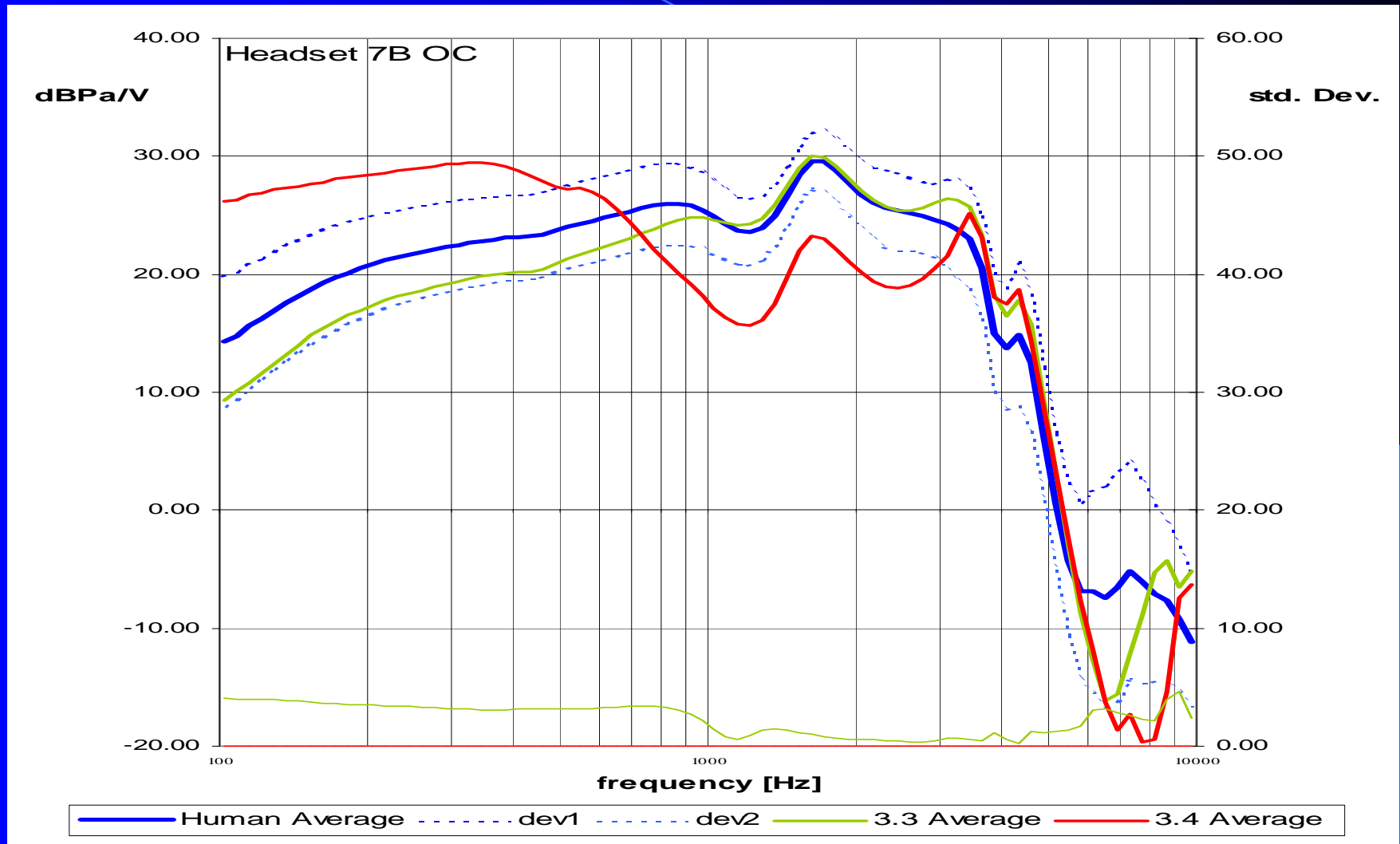
Round Robin Results on Supra-concha Headset



Round Robin Results on Supra-aural Headset with Open Foam Cushion



Round Robin Results on Supra-aural Headset with Leatherette Cushion



Preliminary Observation from the Round Robin Experiment

- Following manufacturer's RTP or RWP or aiming to a real use position the repeatability of both HATSs are relatively good for both speaker and microphone for most type of headsets.
- Microphones are more position sensitive, especially for noise canceling microphones.
- Type 3.3 and 3.4 do not give the same results on speaker measurements for some type of headsets.
- Type 3.3 gives better correlation to real human ear on speakers measurements for most type of headsets.

Contents

- Human Ear & Orthotelephonic Reference
- Ear Simulators
- Type of Headsets
- Old and New Test Methods
- Compare of Type 3.3 and 3.4 Ears/ ITU-T SG12 Round Robin Experiment
- Conclusion

Conclusion

- HATS does not always correlate well with real ear measurements, yet, it is the best among all the available ear simulators today.
- The HRTFs of HATS are reliable only up to 8 kHz.
- Headsets shall be coupled to HATS with manufacturer's RWP or in a position that reflects a real use position.
- A minimum of 5 measurements by completely repositioning the headset is recommended.
- For some microphones a position jig may be needed to obtain a repeatable measurement.